

## What are the Benefits of In-Home Monitoring Services?

- Provides a sense of security knowing a healthcare professional is monitoring your health on a daily basis and communicating important information to your doctor.
- Eliminates unnecessary doctor visits.
- Reduces emergency room visits and hospital re-admissions, especially for patients with chronic illness such as diabetes, congestive heart failure (CHF), hypertension, COPD and others.
- Encourages patient self-management by re-enforcing positive behavior and lifestyle changes.
- Helps the physician provide preventative care to patients, allowing for adjustments to the treatment plan or medications.
- Delivers complete objective, clinical health data to your doctor immediately, with a simple request for information.
- Improves communication between all members of your health care team.
- Ensures that RAVNAH's nursing staff can provide continuity of care by paying attention to how your health information trends over time.

## Physicians Agree on the Effectiveness of Telemonitoring

Physicians confirm that telemonitoring is an effective tool in disease management and improving their patients' medical outcomes.

A study of COPD, CHF and CAD patients showed a 40% - 65% decrease in emergency room visits for those using telemedicine.\*

Prompt communication allows the physician to detect subtle changes in the patient's health condition.

Reducing unnecessary trips to the hospital or emergency room.

\* Honeywell HomMed

### For More Information

*To learn more about our in-home telemonitoring program and how it may benefit you, please call or ask your doctor to call*

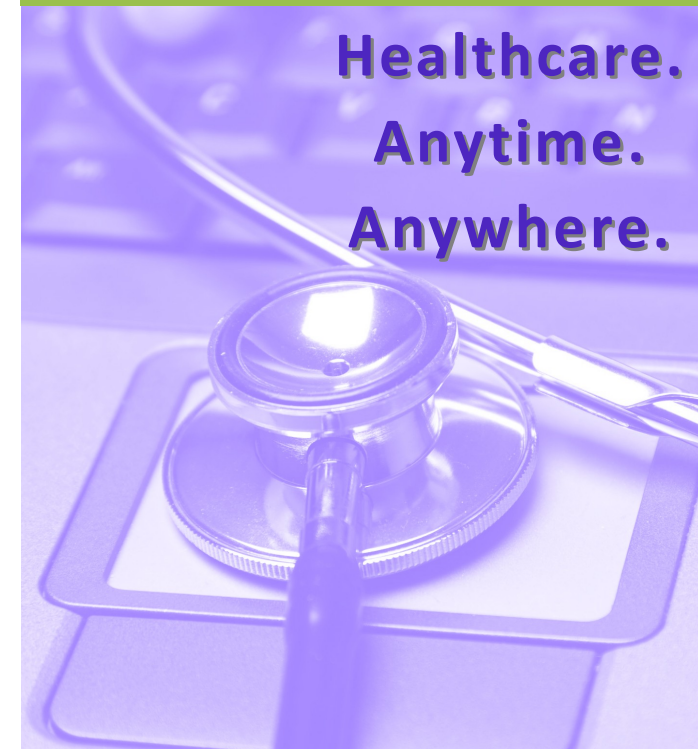
**802.770.1572**



*Our family caring for your family since 1946*

7 Albert Cree Drive • Rutland, VT 05701  
802.775.0568 • 800.244.0568 Toll Free

# HomMed™ Health Monitoring System



**Healthcare.  
Anytime.  
Anywhere.**

***Rutland Area Visiting Nurse  
Association & Hospice...the  
agency you have known and  
trusted for over 65 years***

## Monitor Your Daily Vital Signs Right in Your Own Home

Advanced technology and monitoring equipment helps patients monitor and manage their healthcare, safely and easily, in the comfort of their own home.

Patients under the care of Rutland Area Visiting Nurse Association & Hospice (RAVNAH) are using a new, cost-effective way to help manage their health from home with a system called telemonitoring.

*Traditionally, home care provides a limited number of in-home visits. With our telemonitoring system RAVNAH can clinically manage our patients seven days per week, in addition to scheduled home visits.*

## How It Works



The monitor is installed in patient's home and clinician programs it based on the patient's condition.



Each day, patient completes vital signs collection and responds to symptoms management questions.



The data is then securely transferred to a RAVNAH computer.



Clinician reviews patient assessment data, updates care plan and acts on patient events.



Home care clinicians advise the physician of the patient's condition and vital signs.



Physician updates the recommended care plan to the home care clinician who then advises the patient and caregiver.

## What is the Cost of Home Monitoring

- Medicare-eligible patients who are receiving RAVNAH for home care services will be monitored at no additional cost.
- Patients not covered by Medicare have the option of being monitored for a monthly fee.

*Studies show that both patients and concerned family members place considerable value on the peace of mind this service offers them.*

*"My mother feels more comfortable knowing that she is being watched closely. Both she and my father have taken a more active role in her health with the monitoring system in their home."*

*- Daughter & physician of a telemonitoring patient*

## Should you consider telemonitoring?

**Telemonitoring is recommended for patients with:**

- Any condition that requires frequent monitoring of their vital signs to help them manage their illness.
- Recent hospitalizations or ER visits for existing chronic conditions.
- Chronic care needs who can avoid admission to alternative living facilities if monitored at home.
- History of poor compliance with diet, medications, self-monitoring, or chronic conditions.